



AFFORDABLE • EFFICIENT • SAFE

How to Install & Service a Spectank®



Introduction:

The Spectank and Carbsolve solution is an effective system for maintaining the cleanliness and efficiency of your kitchen equipment. Change the Spectank Carbsolve solution monthly for optimal performance.



Installing the Spectank

1

Water Temperature:

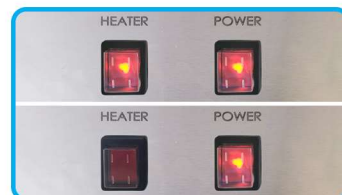
Fill the Spectank with water (hot water preferably) to the water level line indicated on the inside back wall of the Spectank. Always work with care when dealing with hot water.



2

Indicator Lights:

Plug the Spectank into the wall socket and switch it on. Initially, both indicator lights should be on. The left indicator light will toggle on and off once the desired temperature is reached. Only switch off the unit when servicing.



3

Adding Cleaning Solution:

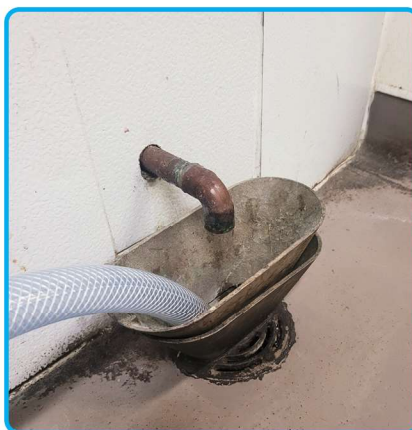
Empty the Carbsolve powder into the Spectank once water has been added. Mix the solution by lifting and lowering the basket.



Servicing the Spectank (Monthly)

Draining the Spectank:

Identify a suitable drainage point, such as mop sinks, floor drains, or dish sinks. Choose the method (drain hose or bucket) that best suits your setup.



Safety Note:

Always exercise caution when working with hot water, electricity and moving equipment.



AFFORDABLE • EFFICIENT • SAFE

Preparing for Drainage:

Disconnect the power cord from the wall socket and unlock the wheels to move the Spectank to the service area. Ensure proper handling to prevent accidents.

Using a Drain Hose (If Applicable):

- Attach a 1" hose adapter to the Spectank's ball valve. (It screws in)
- Place one end of the drain hose onto the adapter and the other end into the drain.
- Before opening the valve tap completely, ensure the solution runs smoothly down the drain. If there is a may be a blockage. Clear the blockage before continuing.



Using a Bucket (If Applicable):

- Fill a bucket with solution and dispose down the sink, repeating until almost all solution is removed.
- Rinse the tank with fresh water as you get to the bottom.
- Continue bucketing the mixed water while adding fresh water until the water is clean.



Cleaning the Spectank:

Basket Cleaning:

Remove the Spectank basket, clean, and rinse it thoroughly.

Tank Interior:

Use fresh water to rinse the tank interior, focusing on areas with excessive F.O.G. Scrape down excess build up and wipe down all sides with a cloth including the inside of the lid and lip.

Exterior Cleaning:

Clean the outer sides, lid and handles of the Spectank by wiping them down with a general-purpose cleaning solution. (Include wiping the power cord, and the drain valve.)

Polishing (Optional):

For a shiny finish, you can use a stainless-steel polish.

Service Conclusion:

Once servicing is complete, follow the installation instructions above to prepare the Spectank for use.

Safety Note:

Always exercise caution when working with hot water, electricity and moving equipment.

Service Register:





The use of a service register wall chart provided by, and available from your supplier, will help you keep track of when the next service is due, typically one month from the last service or installation date.

CLIENT SERVICE REGISTER

Month	Date of Service	Technician Signature
1		
2		
3		
4		
5		
6		
7		
8		
9		
10		
11		
12		

Optimal After Service Use

In order to maximise tank use after a service, we recommend the following sequence of events while the water heats up. This will allow you to get a lengthened soak time in the Carbsolve chemical bath, in a moderately cool solution. After items are removed from the tank, a good scrub and rinse will see all dirt and debris easily removed.

Cutting Boards & Stainless Steel Cutlery 	Hard Plastic Crates & Containers 	Polyester Broom Heads & Floor Squeezes 	Stained Crockery 
First 2 Hours	2-4 Hours	4-6 Hours	6-8 Hours

Safety Note:

Always exercise caution when working with hot water, electricity and moving equipment.